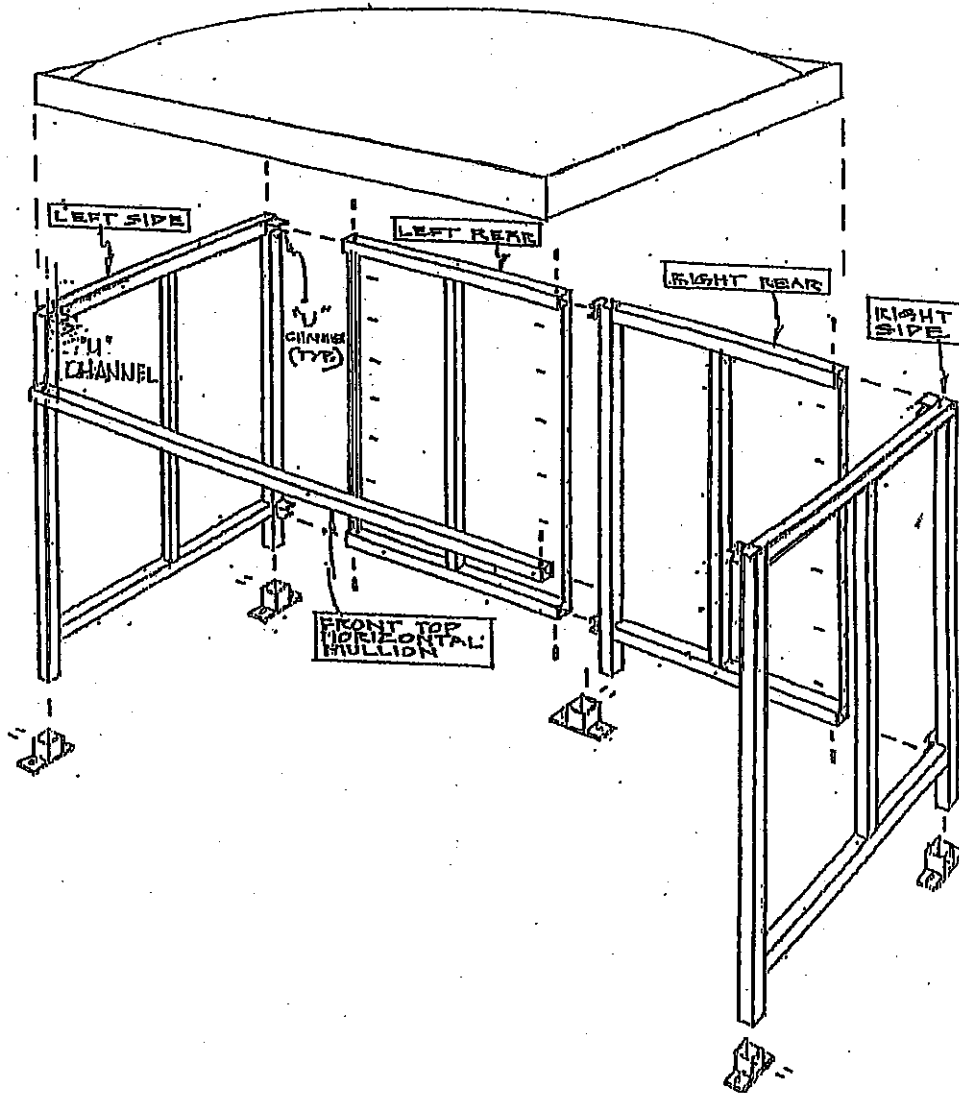


## HYPOTHETICAL SHELTER SHOWN



Concrete pads shall include the construction of 6" thick Portland Concrete cement pads and the sub grade therefore. Construction of concrete pads and curbing shall be identical to that used for concrete sidewalks. The Contractor shall excavate the existing materials so that the concrete pad can be placed such that the last layer will be at existing grade. Any edges of existing pavement that the concrete pad meets will be filled or cut so that the edges are straight and clean.



**handi-hut inc.**

Three Grunwald St. Clifton, New Jersey 07013  
TEL: 973-614-1800 · 1-800-603-6635 · FAX: 973-614-8011  
WEBSITE: [www.handi-hut.com](http://www.handi-hut.com) · E-MAIL: [staff@handi-hut.com](mailto:staff@handi-hut.com)

## SHELTER ON-SITE INSTALLATION INSTRUCTIONS

### Customer:

Wall sections are marked as follows: RIGHT SIDE, RIGHT REAR, LEFT SIDE, LEFT REAR and WIDESCREEN (optional). A wall section may have one or more panels, depending on shelter model. Wall sections must be installed with the glazed panels flush to the outside of the shelter. Concrete surface should be level with a maximum of 3" vertical variation.

### CONNECTING WALL SECTIONS (Fig. 1)

Start with right side and right rear wall sections. Set vertical posts into anchor flanges with flanges oriented as shown in drawing. Engage top and bottom horizontal mullions of rear wall section over "U" channels at top and bottom of rear corner post of side wall. Drill through top and bottom horizontal mullion of rear wall section into the "U" channels with a "G" size drill bit (.257" dia.). Locate holes approx. as shown in Fig. 1. Fasten with supplied 1/4" x 3/8" drive rivets, driving rivets with hammer. Repeat for balance of wall sections and the front top horizontal mullion. If windscreen is included, attach two top front horizontal mullions to both sides of windscreen and front top corners of side wall sections. With a pop rivet gun, secure vertical panel sub-frames to all vertical posts where wall sections are field connected with supplied short 3/16" dia. (#64) pop rivets. (Note: It is not required to chase holes into vertical posts for these rivets - posts are factory slotted to readily accept rivets for fast field installation).

### ROOF (all styles except Historical): Fig. 2, 3, 4, or 5

Set roof assembly onto wall sections. Make sure the majority of the drain holes inside roof fascia are towards rear of the shelter. From inside shelter, chase through pre-drilled holes on inside lip of roof fascia into the top horizontal mullions of wall sections, including top front horizontal mullion. Use #11 drill bit. (.191" dia.). Fasten with supplied long 3/16" dia. (#68) pop rivets.

### ROOF (Historical only): Fig. 6

Set roof assembly onto wall sections. Make sure the majority of the drain holes inside roof fascia are towards rear of the shelter. Align perimeter of inside roof frame to perimeter of top wall headers. From inside of shelter attach 1/4" x 3" roof connecting plate to wall headers and roof frame using #12 x 1 1/4" TEK (self drilling) screws approx. 18" O.C. (4 sides)

### LEVELING SHELTER:

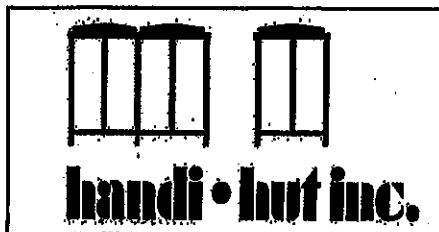
With shelter in correct location on concrete surface, put bubble leveler on bottom horizontal mullions. If surface is not level, shim shelter to a maximum of 3" vertically with wedges, bumper jack, etc. to obtain and hold level position. Chase through two pre-drilled holes on each anchor flange into vertical posts with a "G" drill bit (.257" dia.). Fasten with supplied 1/4" x 1/2" drive rivets, two per flange. Remove leveling devices.

### SECURING TO CONCRETE SURFACE: Fig. 7, 8, 9

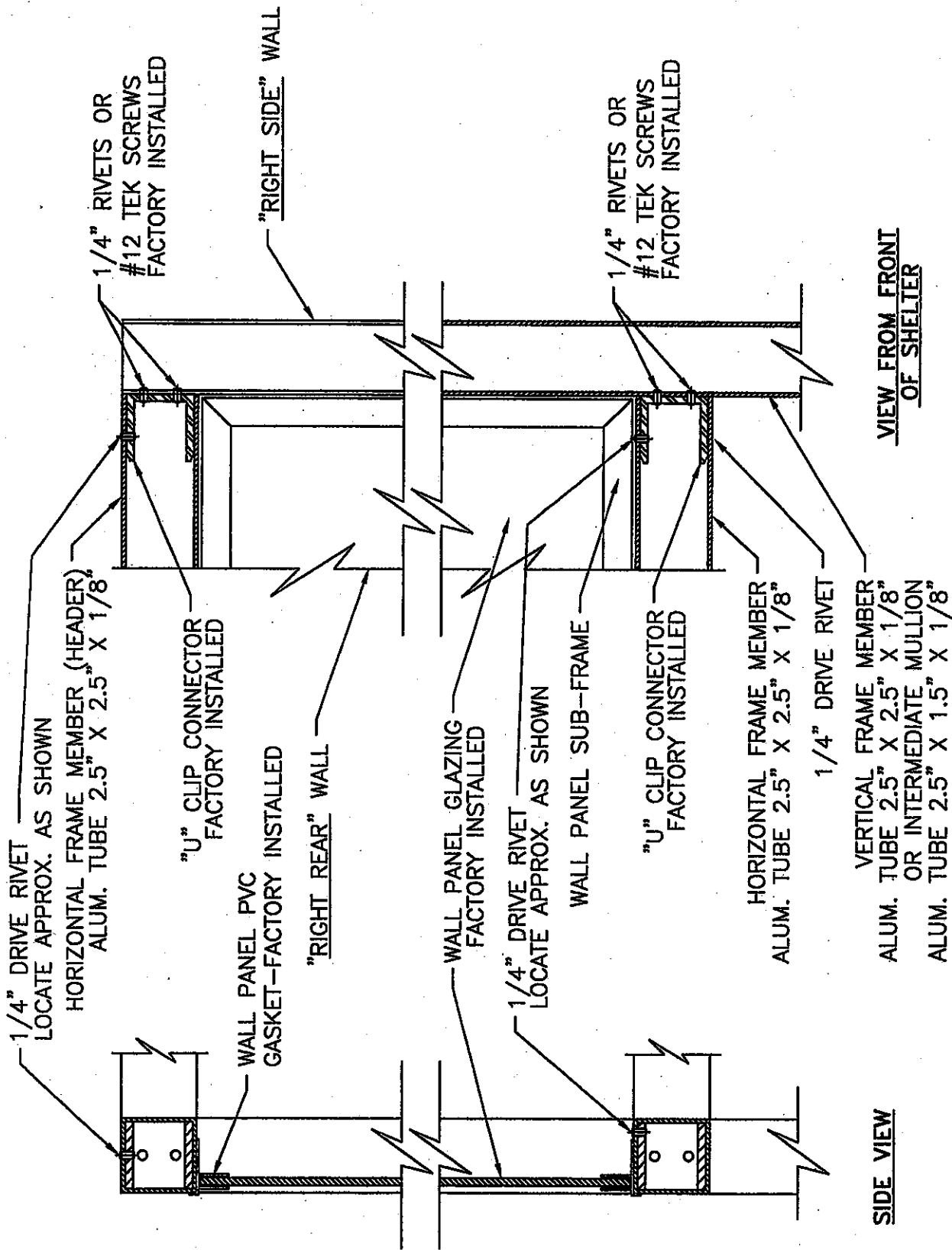
Make sure all wall sections are plumb and square. Mark concrete surface through anchor flange holes. Drill 1/2" dia. holes into concrete surface. An electric drill hammer is required. Hammer supplied 1/2" dia. expansion bolts into holes leaving no less than 3/4" exposed thread above surface. Secure with supplied washers and nuts turning nuts till tight. Peen exposed thread.

### BENCH / BACKREST:

See Fig. 10 for securing bench / backrest.



Three Grunwald St. Clifton, NJ 07013  
Tel: 973-614-1800 - 1-800-603-6635 - Fax 973-614-8011  
Web: [www.handi-hut.com](http://www.handi-hut.com) - E-mail: [staff@handi-hut.com](mailto:staff@handi-hut.com)

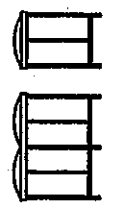


SIDE VIEW

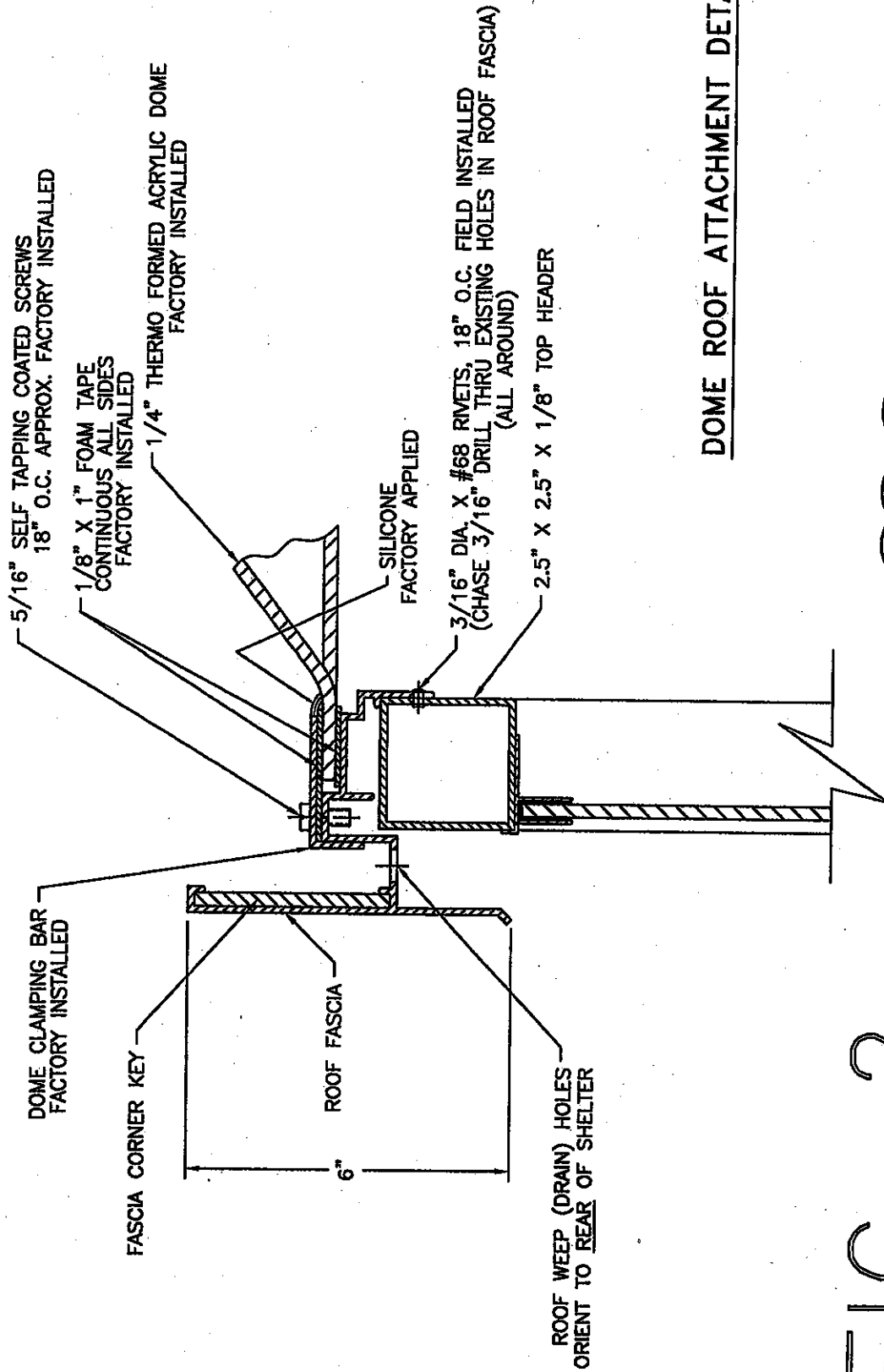
VIEW FROM FRONT OF SHELTER

**FIG. 1**

WALL PANEL CONNECTION DETAIL  
TYPICAL FOR ALL  
WALL PANEL CONNECTIONS



handi-hut inc.  
 3 GRUNWALD ST. CLIFTON, NJ 07013  
 973-614-1800 FAX: 973-614-8011



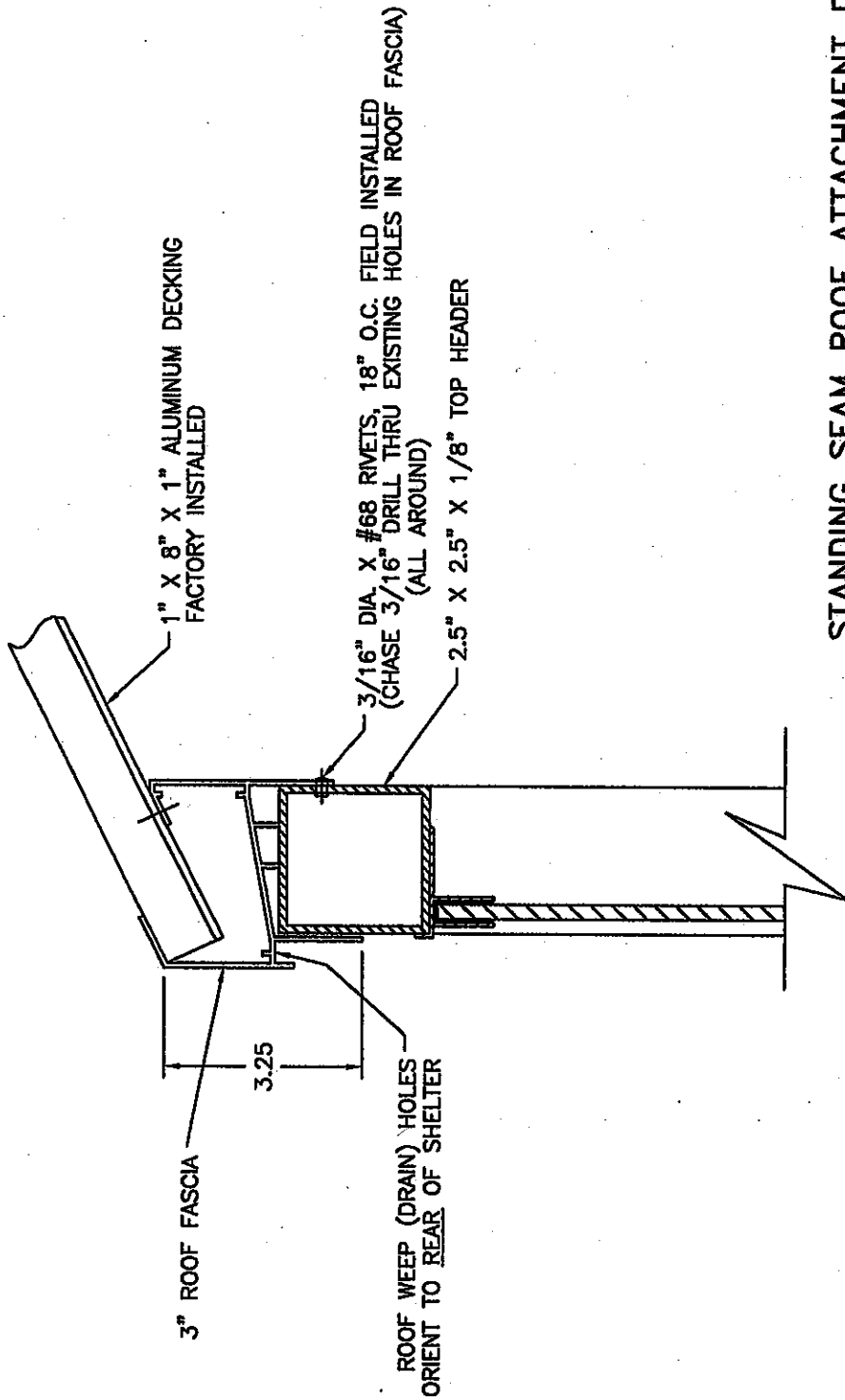
DOME ROOF ATTACHMENT DETAIL

FIG. 2



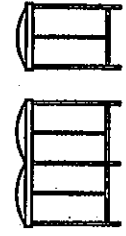
handi-hut inc.

3 GRUNWALD ST. CLIFTON, NJ 07013  
973-614-1800 FAX: 973-614-8011

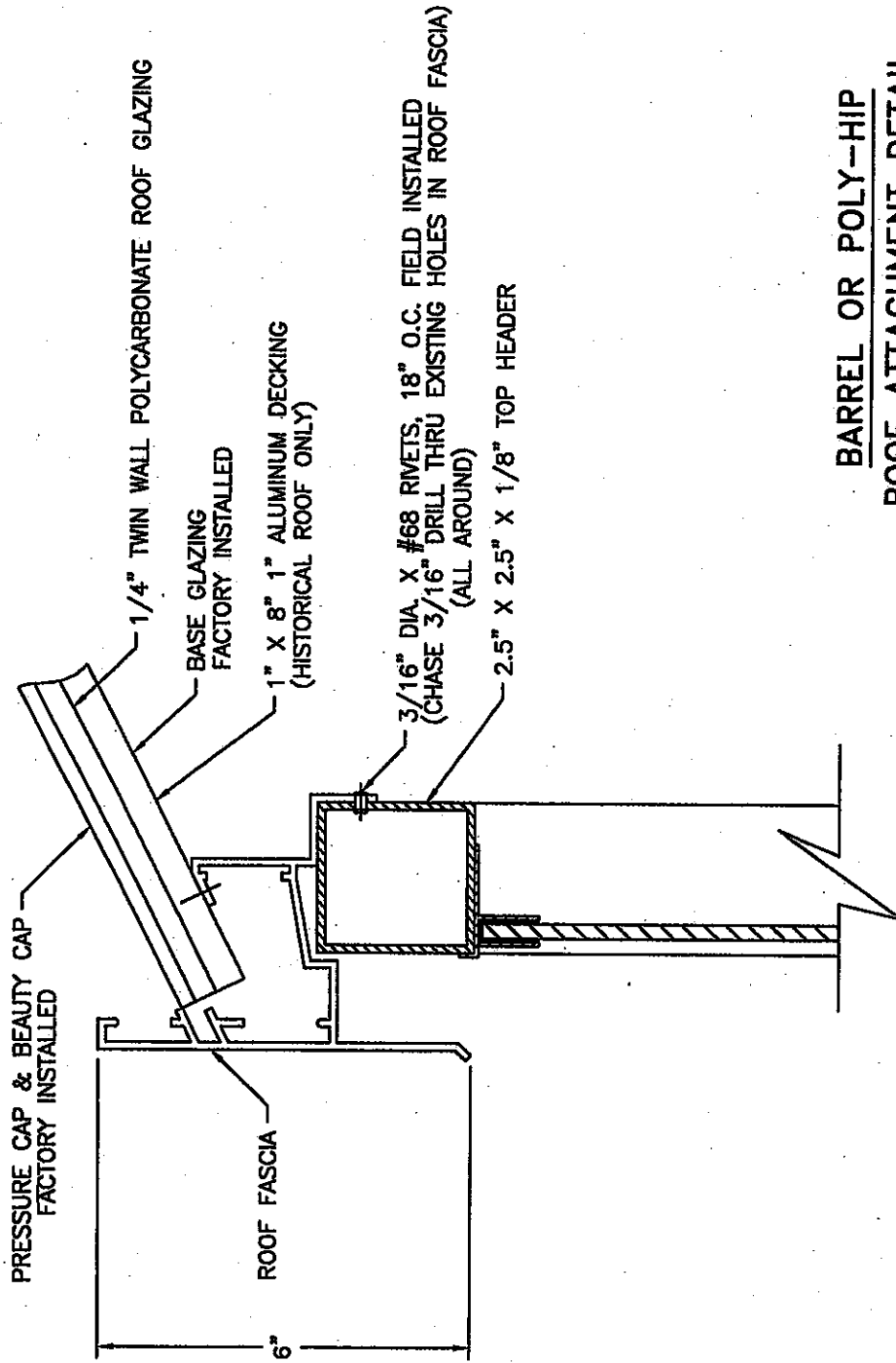


STANDING SEAM ROOF ATTACHMENT DETAIL

FIG. 3

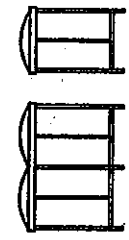


handi-hut inc. 3 GRUNWALD ST. CLIFTON, NJ 07013  
973-614-1800 FAX: 973-614-8011



BARREL OR POLY-HIP  
ROOF ATTACHMENT DETAIL  
6" FASCIA

FIG. 4



handi-hut inc. 3 GRUNWALD ST. CLIFTON, NJ 07013  
 973-614-1800 FAX: 973-614-8011

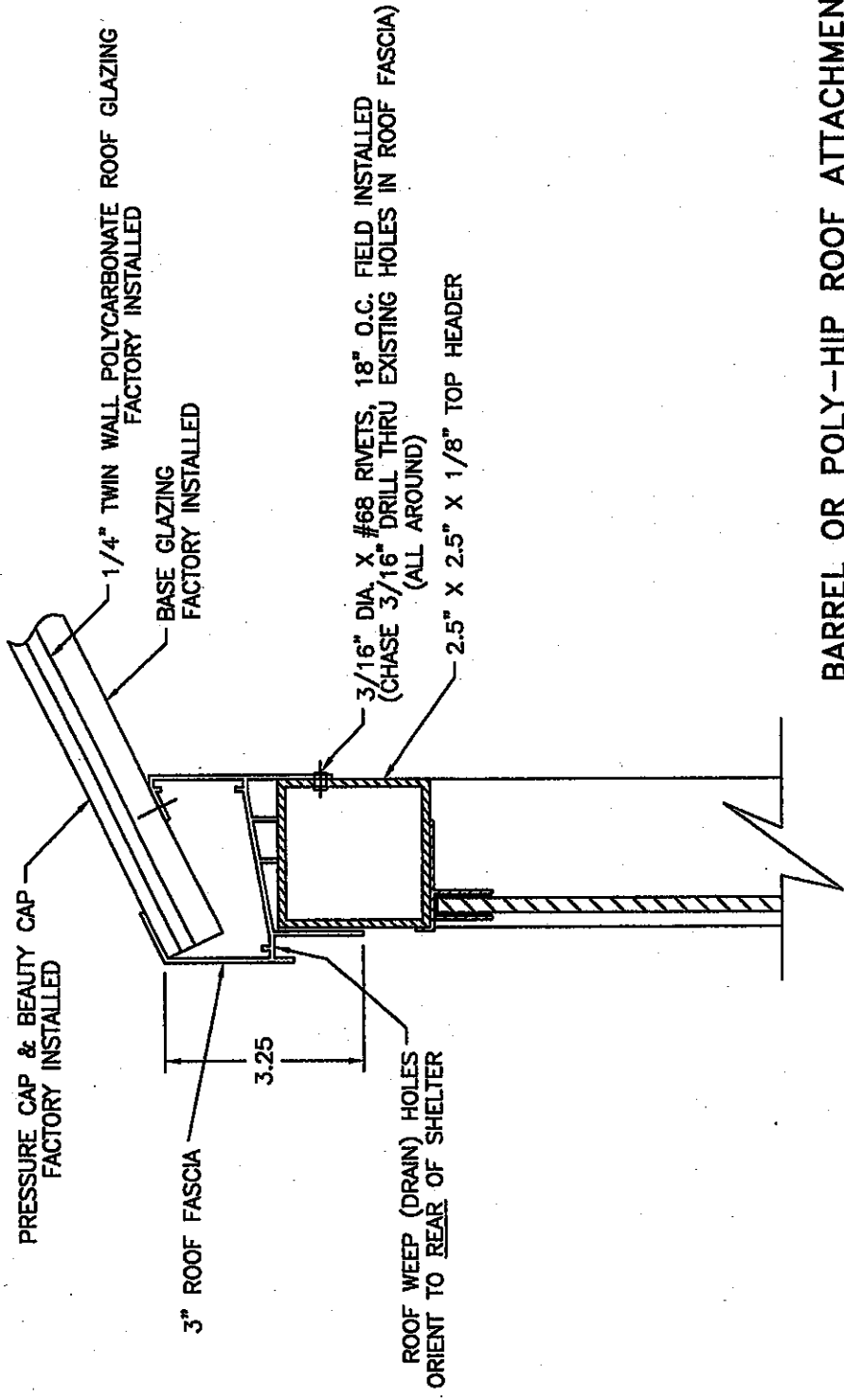
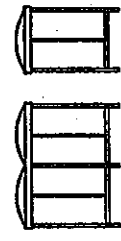
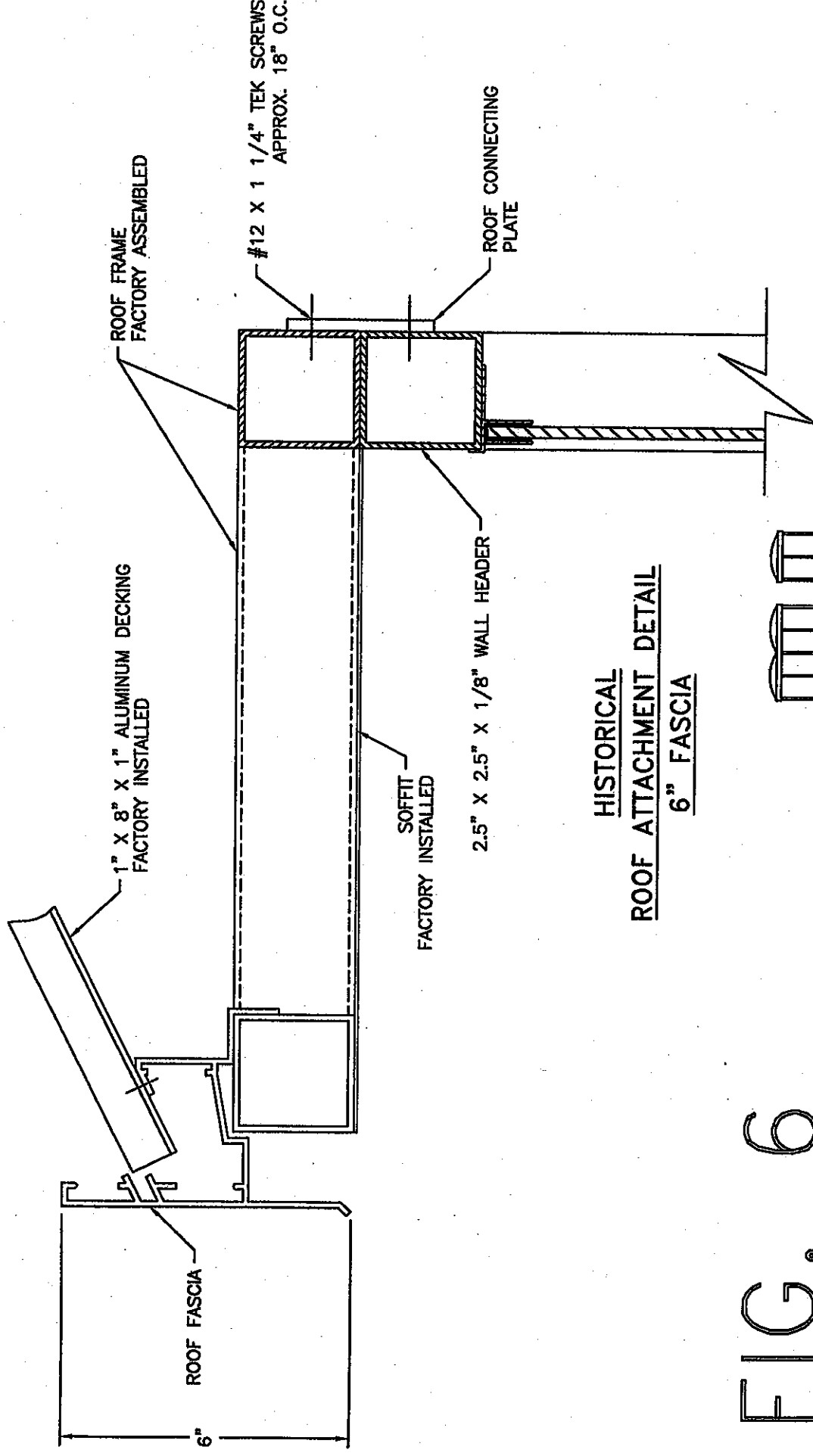


FIG. 5

BARREL OR POLY-HIP ROOF ATTACHMENT DETAIL  
3" FASCIA

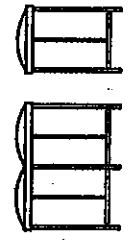


handi-hut inc.  
 3 GRUNWALD ST. CLIFTON, NJ 07013  
 973-614-1800 FAX: 973-614-8011



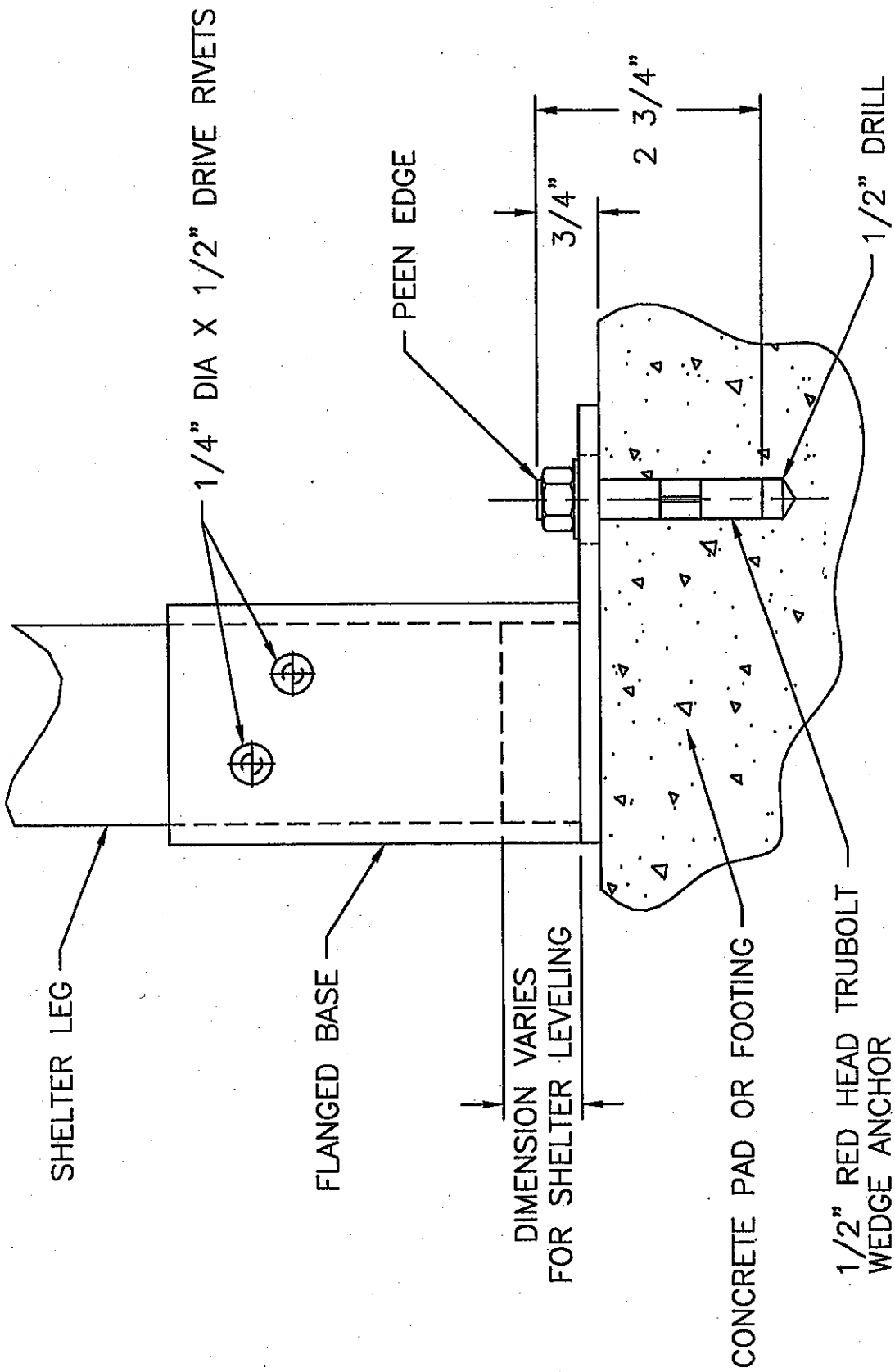
HISTORICAL  
ROOF ATTACHMENT DETAIL  
6" FASCIA

FIG. 6



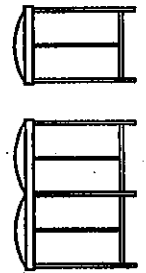
handi-hut inc. 973-614-1800 FAX: 973-614-8011  
3 GRUNWALD ST. CLIFTON, NJ 07013





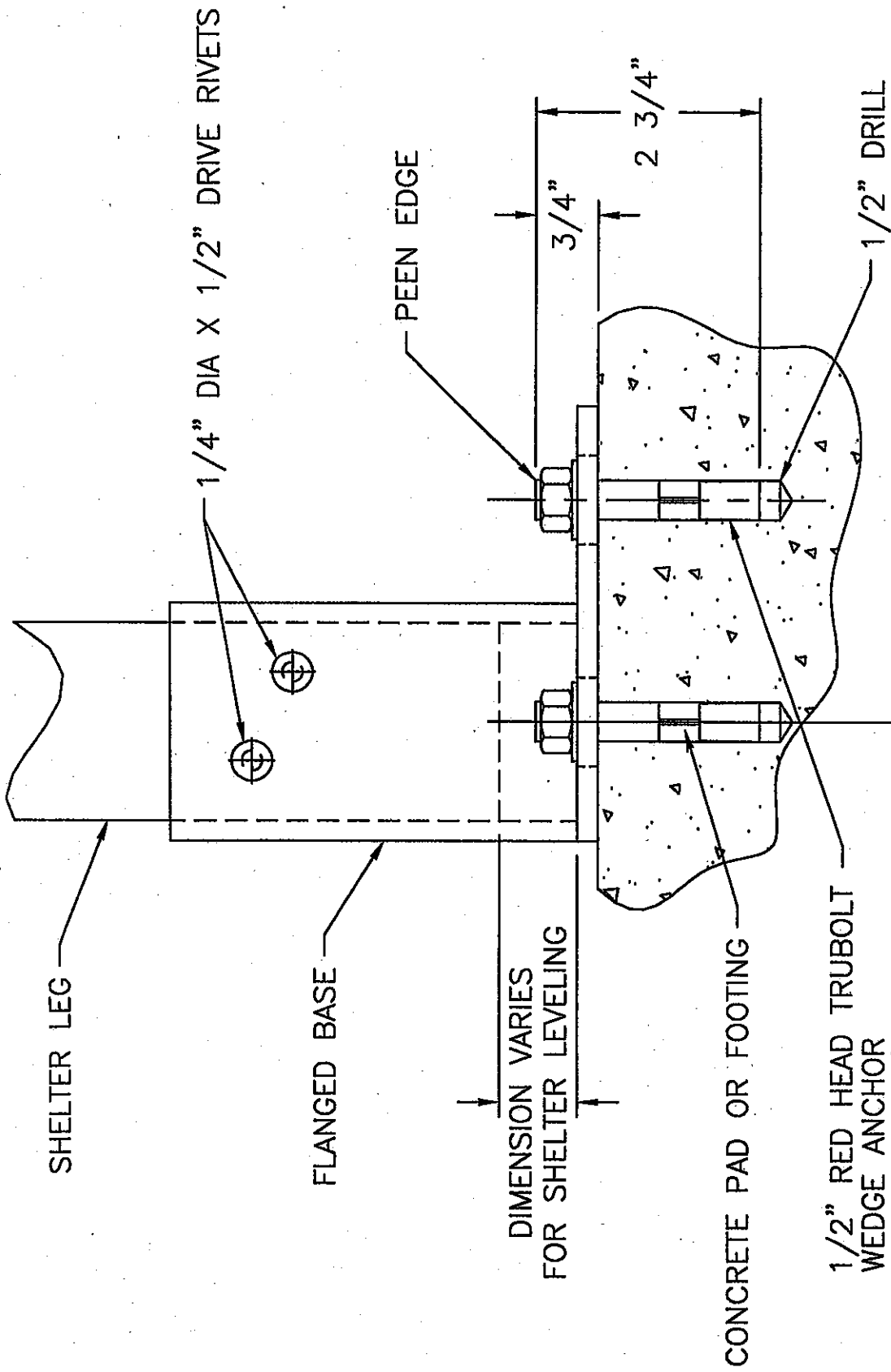
ANCHOR DETAIL (ENDS)  
(AT OPENINGS)

FIG. 7



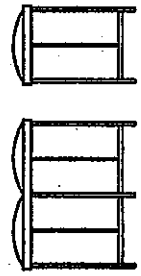
handi-hut inc.

3 GRUNWALD ST. CLIFTON, NJ 07013  
 973-614-1800 FAX: 973-614-8011



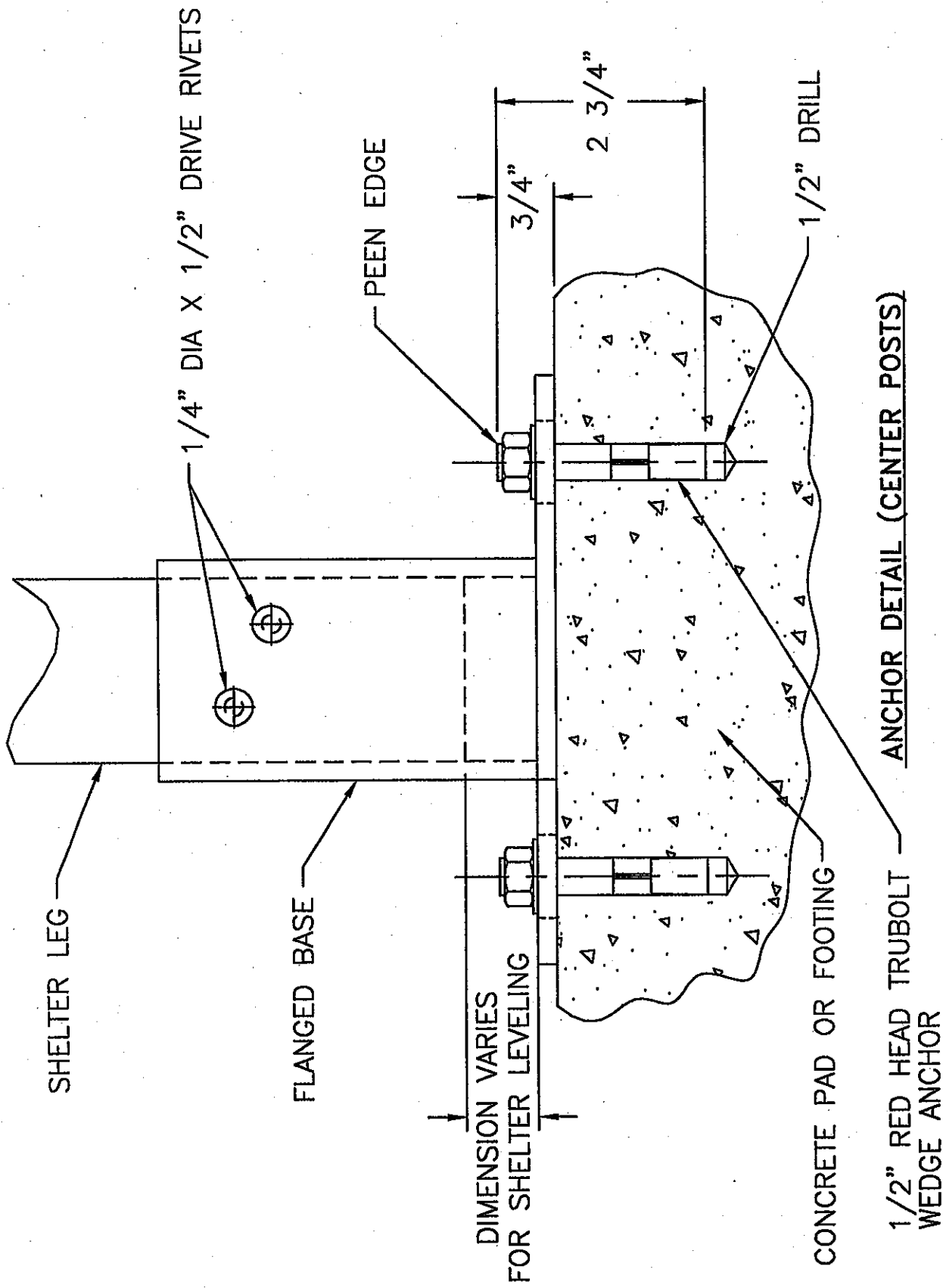
ANCHOR DETAIL (CORNER)

FIG. 8



handi-hut inc.

3 GRUNWALD ST. CLIFTON, NJ 07013  
 973-614-1800 FAX: 973-614-8011



ANCHOR DETAIL (CENTER POSTS)

1/2" RED HEAD TRUBOLT WEDGE ANCHOR

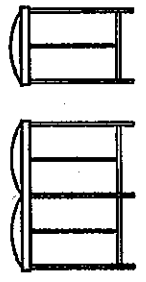


FIG. 9

3/16" (#68) DIA POP RIVETS  
QTY. VARIES PER SHELTER SIZE

BACKREST

LEFT SIDE POST

15" REF.

15" REF.

33"

18" REF.

(4) 3/16" (#68) POP RIVETS  
1/4" DIA X 3/8" DRIVE RIVETS  
(2) PER SIDE

FRONT VIEW

RIGHT SIDE POST

BENCH SECTIONS

3/16" (#68) POP RIVETS  
(4) EACH END

BENCH END SUPPORT  
(1) EACH END

BOTTOM HORIZONTAL SIDE  
WALL MULLION

1/4" DIA X 3/8" DRIVE RIVETS  
(2) PER SIDE

END SUPPORT DETAIL

2 1/2"

1. ATTACH SIDE SUPPORT BRACKETS TO BOTTOM HORIZONTAL TUBES OF SIDE WALLS. REAR OF SUPPORT BRACKET SHOULD BE 2.5" FROM THE VERTICAL CORNER POST. DRILL HOLES INTO HORIZONTAL TUBES ("f" BIT). ATTACH SUPPORT BRACKET WITH (1/4" X 3/8" DRIVE RIVETS.
2. POSITION THE (2) BENCH SECTIONS ONTO THE SIDE SUPPORT BRACKETS AT LOCATION SHOWN AND DRILL HOLES INTO THE UNDERSIDE OF EACH SECTION WITH A #11 BIT. ATTACH SECTIONS WITH 3/16" (#68) POP RIVETS.
3. FOR SHELTERS WITH FOUR OR MORE REAR WALL PANELS, POSITION THE CENTER SUPPORT BRACKET TO THE REAR WALL VERTICAL MULLION AND ATTACH WITH (8) 1/4" X 3/8" DRIVE RIVETS. ATTACH THE BENCH SECTIONS AS DESCRIBED IN STEP 2.



handi-hut inc.  
3 GRUNWALD ST. CLIFTON, NJ 07011  
973-614-1800 FAX: 973-614-801

FIG. 10

# BENCH/BACKREST INSTALLATION

# SHELTERS FOR HIDALGO AND CAMERON COUNTY 2010

## CAMERON COUNTY

<u>City</u>	<u>Quantity</u>
Santa Rosa	3
La Feria	4
Primera	3
San Benito	10
Harlingen	3

## HIDALGO COUNTY

<u>City</u>	<u>Quantity</u>
Weslaco	8
San Juan	4
Mercedes	3
Mission	9
Edinburg	4
Alamo	3
Pharr	2
Donna	4