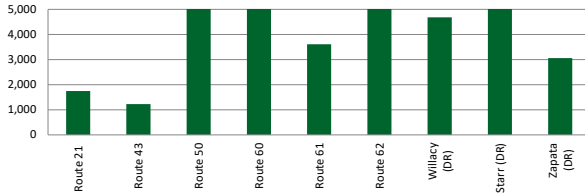


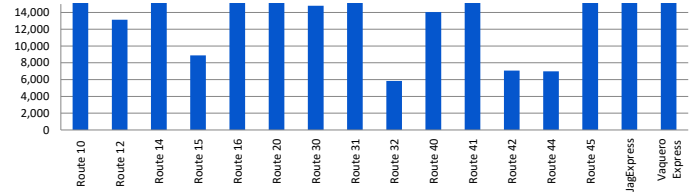


LOWER RIO GRANDE VALLEY DEVELOPMENT COUNCIL
Valley Metro Service Summary
FY 2019 September-July

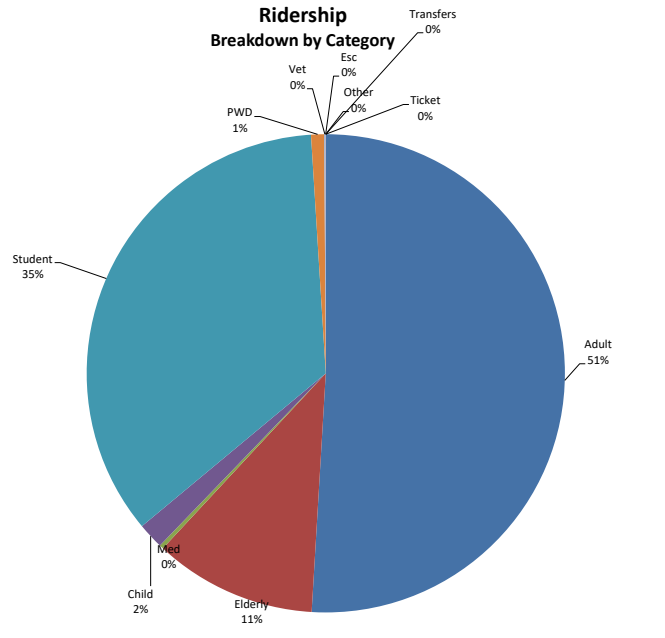
RURAL
Ridership by Route



URBAN
Ridership by Route



	Route	Total Passenger Trips	Route Activity	Area(s) Served
RURAL	Route 21	1,749	0%	Sullivan City, West Hidalgo County
	Route 43	1,225	0%	South Cameron County
	Route 50	58,359	8%	Brownsville, Port Isabel
	Route 60	7,633	1%	Roma, Rio Grande City
	Route 61	3,609	0%	Rio Grande City
	Route 62	5,031	1%	Rio Grande City
	Willacy (DR)	4,684	1%	Willacy County
	Starr (DR)	7,268	1%	Starr County
	Zapata (DR)	3,056	0%	Zapata County
Metro Express	39,597	5%	Rio Grande Valley	
URBAN	Route 10	30,866	4%	Edinburg
	Route 12	13,131	2%	Edcouch, Elsa, Edinburg
	Route 14	24,736	3%	Edinburg
	Route 15	8,878	1%	Edinburg
	Route 16	66,219	9%	Edinburg
	Route 20	33,016	4%	Mission
	Route 30	14,809	2%	Pharr, San Juan
	Route 31	69,747	9%	Hidalgo County
	Route 32	5,840	1%	Donna
	Route 40	14,056	2%	Harlingen
	Route 41	15,531	2%	Harlingen
	Route 42	7,085	1%	San Benito
	Route 44	6,980	1%	Primera, La Feria, Santa Rosa
	Route 45	47,463	6%	Cameron County
JagExpress	63,668	9%	Weslaco, Pharr, McAllen	
Vaquero Express	215,605	28%	Edinburg	
Hidalgo	292	0%	City of Hidalgo	
TOTAL	770,133	100%		



FY 2018 September - July
635,938

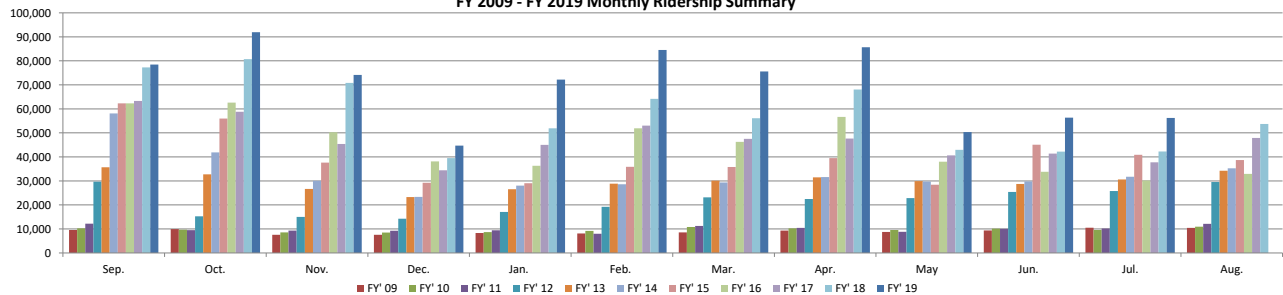
YEAR TO DATE RIDERSHIP REPORT
 FY 2019 September-July
770,133

DIFFERENCE
134,195

% DIFFERENCE
21%

- * Rural service - service in rural low -population areas outside of urbanized areas
- * Urban service- service between or within urbanized areas

FY 2009 - FY 2019 Monthly Ridership Summary



Fiscal Year	Sep.	Oct.	Nov.	Dec.	Jan.	Feb.	Mar.	Apr.	May	Jun.	Jul.	Aug.	Total	Difference	%Change
FY 08	9,978	4,927	4,378	4,077	9,057	9,065	8,832	9,195	9,624	9,031	8,706	9,568	96,438	45,095	88%
FY 09	9,538	9,913	7,540	7,562	8,323	8,113	8,567	9,344	8,720	9,363	10,483	10,428	107,894	11,456	12%
FY 10	10,274	9,702	8,580	8,471	8,670	9,204	10,836	10,274	9,566	10,107	9,537	10,931	116,152	8,258	8%
FY 11	12,184	9,480	9,336	9,254	9,445	8,016	11,255	10,460	8,801	10,046	10,176	12,111	120,564	4,412	4%
FY 12	29,644	15,256	14,982	14,267	17,057	19,196	23,184	22,450	22,827	25,436	25,807	29,518	259,624	139,060	115%
FY 13	35,707	32,758	26,634	23,293	26,542	28,858	30,087	31,465	29,911	28,744	30,596	34,255	358,850	99,226	38%
FY 14	58,118	41,893	30,069	23,338	28,011	28,593	29,386	31,638	29,761	29,806	31,733	35,241	397,587	38,737	11%
FY 15	62,315	55,976	37,648	29,214	29,063	35,854	35,785	39,503	28,431	45,056	40,891	38,683	478,419	80,832	20%
FY 16	62,317	62,627	50,274	38,130	36,305	51,887	46,286	56,675	37,990	33,822	30,148	32,939	539,400	60,981	13%
FY 17	63,305	58,773	45,397	34,433	45,012	53,051	47,542	47,628	40,601	41,409	37,719	47,917	562,787	23,388	4%
FY 18	77,255	80,744	70,823	39,507	51,877	64,209	56,076	68,058	42,956	42,169	42,264	53,725	689,663	126,876	23%
FY 19	78,440	91,930	74,137	44,709	72,199	84,562	75,604	85,670	50,318	56,330	56,234		770,133	80,470	12%
Monthly Change from Previous FY	1,185	11,186	3,314	5,202	20,322	20,353	19,528	17,612	7,362	14,161	13,970				
% Change	2%	12%	4%	12%	28%	24%	26%	21%	18%	34%	37%				

FY 2018 URBANIZED PERFORMANCE MEASURES*

COST EFFECTIVENESS

Cost per revenue mile = \$2.40 State Avg. = \$4.85
 Cost per revenue hour = \$46.22 State Avg. = \$73.39
 Cost per passenger = \$4.16 State Avg. = \$5.21

SERVICE EFFICIENCY

Passengers per revenue mile = 0.58 State Avg. = .93
 Passengers per revenue hour = 11.12 State Avg. = 14.10

FY 2018 NONURBANIZED PERFORMANCE MEASURES*

COST EFFECTIVENESS

Cost per revenue mile = \$3.03 State Avg. = \$2.99
 Cost per revenue hour = \$71.08 State Avg. = \$59.91
 Cost per passenger = \$14.83 State Avg. = \$20.21

SERVICE EFFICIENCY

Passengers per revenue mile = 0.20 State Avg. = .15
 Passengers per revenue hour = 5.44 State Avg. = 2.96